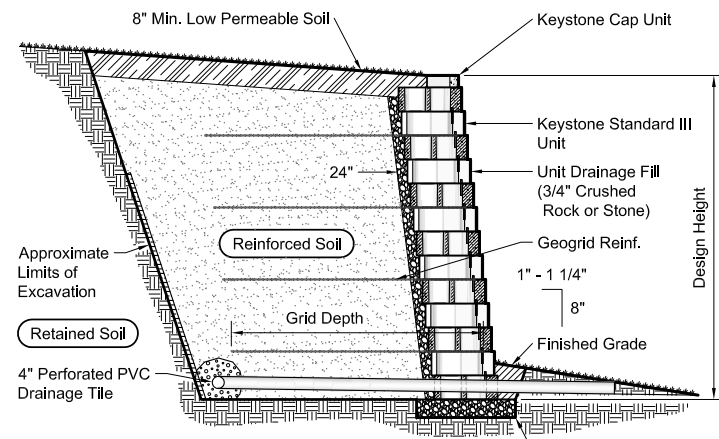


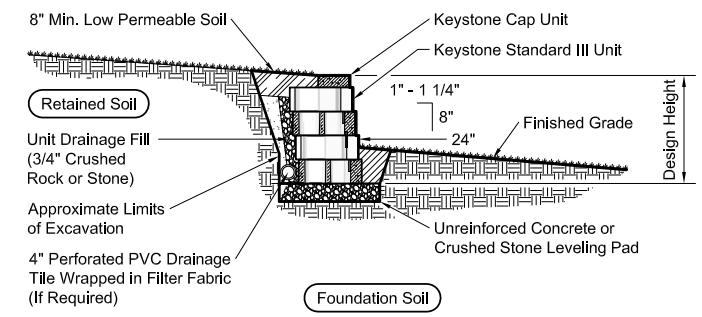
Note:
When site conditions require, wrap drainage tile in 3/4" aggregate and filter fabric with drainage composite or aggregate back drain system, as directed by geotechnical engineer.

Typical Reinforced Wall Section
Standard III Unit - Near Vertical Setback



Note:
When site conditions require, wrap drainage tile in 3/4" aggregate and filter fabric with drainage composite or aggregate back drain system, as directed by geotechnical engineer.

Typical Reinforced Wall Section
Standard III Unit - 1" Setback

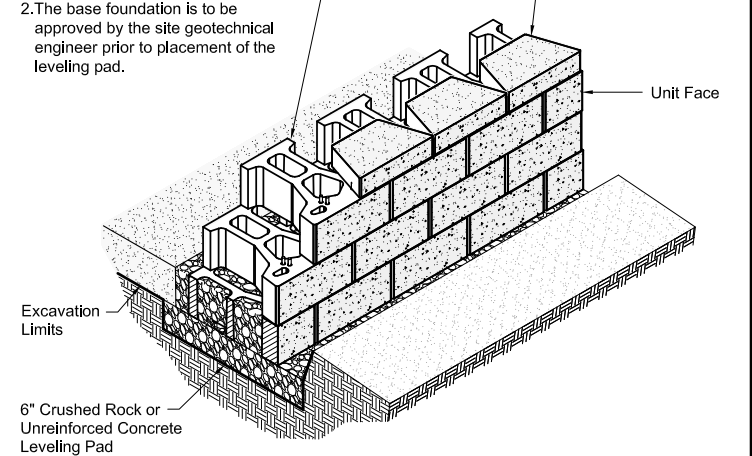


Typical Gravity Wall Section
Standard III Unit - 1" Setback

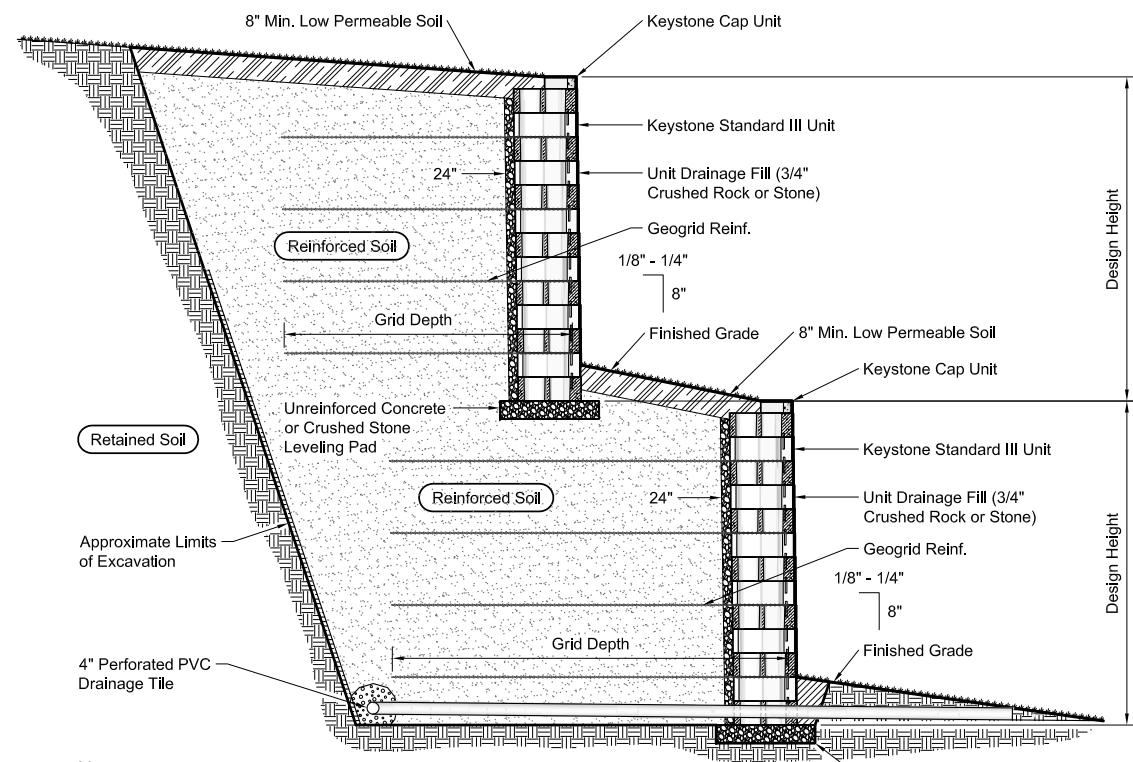
Base Leveling Pad Notes:

- The leveling pad is to be constructed of crushed stone or 2,000 psi± unreinforced concrete
- The base foundation is to be approved by the site geotechnical engineer prior to placement of the leveling pad.

Standard III Unit	4in Trap Cap Unit
Width: 18"	Width: 17 1/4" / 11"
Depth: 21"	Depth: 10"
Height: 8"	Height: 4"
Weight: 95 lbs	Weight: 47 lbs

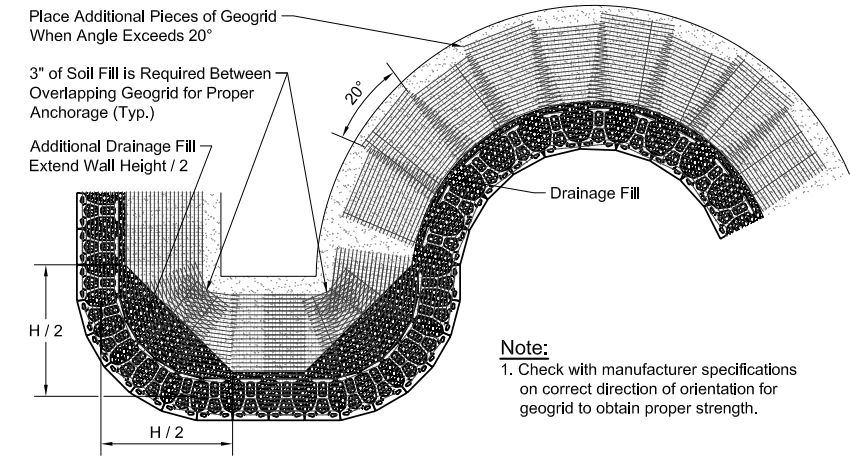


Standard III Unit/Base Pad Isometric Section View
* Dimensions & Weight May Vary by Region



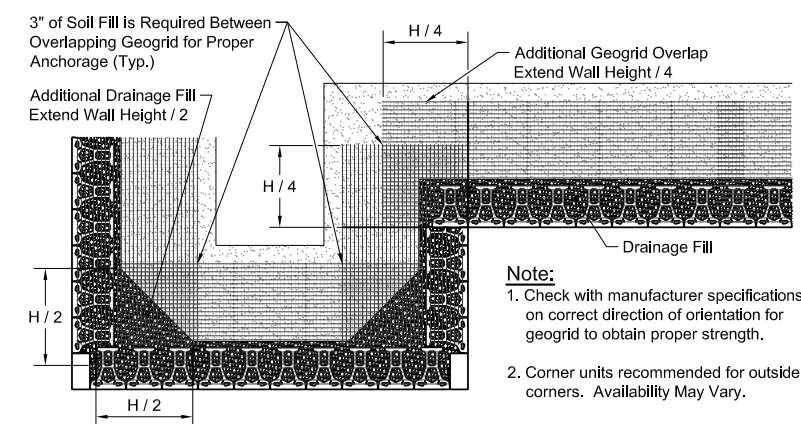
Note:
When site conditions require, wrap drainage tile in 3/4" aggregate and filter fabric with drainage composite or aggregate back drain system, as directed by geotechnical engineer.

Typical Reinforced Tiered Wall Section
Standard III Unit - Near Vertical Setback



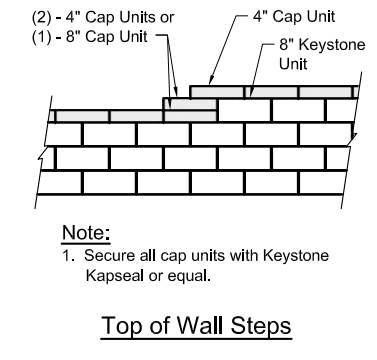
Geogrid Installation on Curves

Note:
1. Check with manufacturer specifications on correct direction of orientation for geogrid to obtain proper strength.



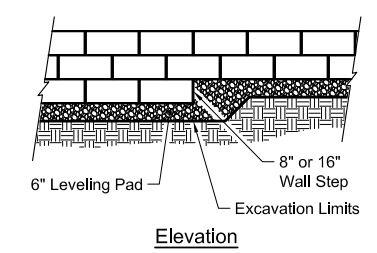
Geogrid Installation at Corners

Note:
1. Check with manufacturer specifications on correct direction of orientation for geogrid to obtain proper strength.
2. Corner units recommended for outside corners. Availability May Vary.



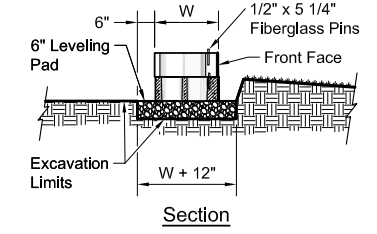
Top of Wall Steps

Note:
1. Secure all cap units with Keystone Kapseal or equal.

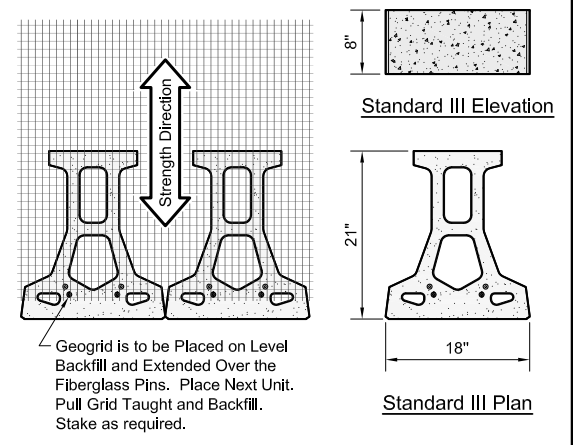


Leveling Pad Detail

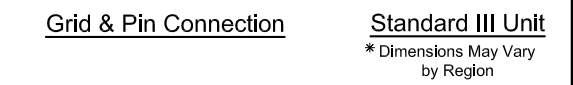
Note:
1. The leveling pad is to be constructed of crushed stone or 2000 psi± unreinforced concrete.



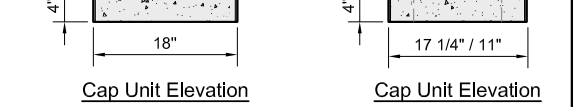
Section



Standard III Plan



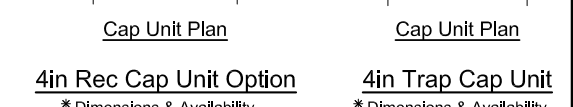
Grid & Pin Connection



Cap Unit Elevation



Cap Unit Plan



4in Rec Cap Unit Option

4in Trap Cap Unit

Copyright 2018 Keystone Retaining Wall Systems

Design is for internal stability of the KEYSTONE wall structure only. External stability, including but not limited to foundation and slope stability is the responsibility of the Owner. The design is based on the assumption that the materials within the retained mass, methods of construction, and quality of materials conform to KEYSTONE's specification for this project.

This drawing is being furnished for this specific project only. Any party accepting this document does so in confidence and agrees that it shall not be duplicated in whole or in part, nor disclosed to others without the consent of Keystone Retaining Wall Systems, Inc.

No.	Date	Revision	By

KEYSTONE
HARDSCAPES

4444 W 78th Street
Minneapolis, MN 55435
952-897-1040

Designed By: RKM	Title: Keystone Standard III	Date: 01-04-18
Checked By: CDM	Project: Keystone Retaining Wall Systems Typical Wall Details	Project No:
Scale: No Scale		Drawing No: